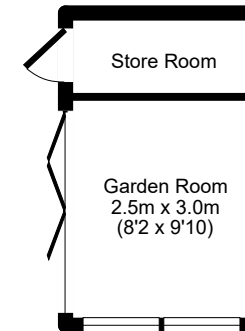
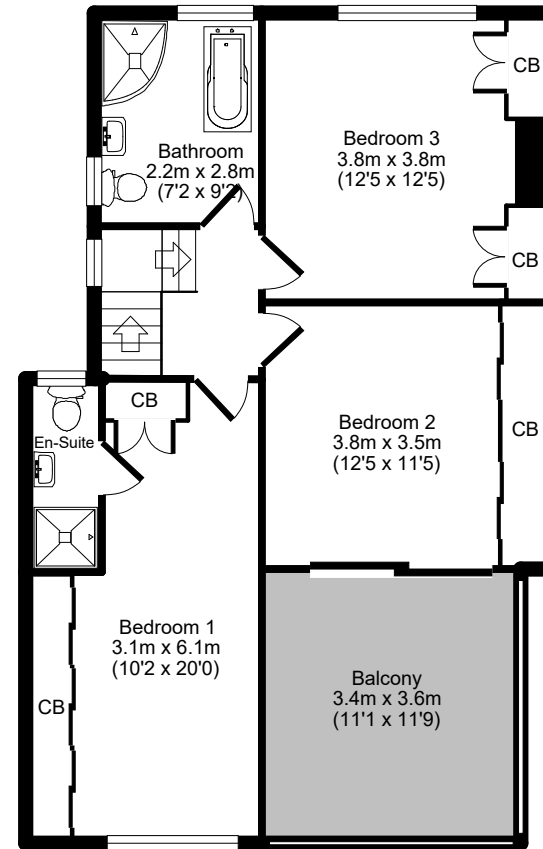
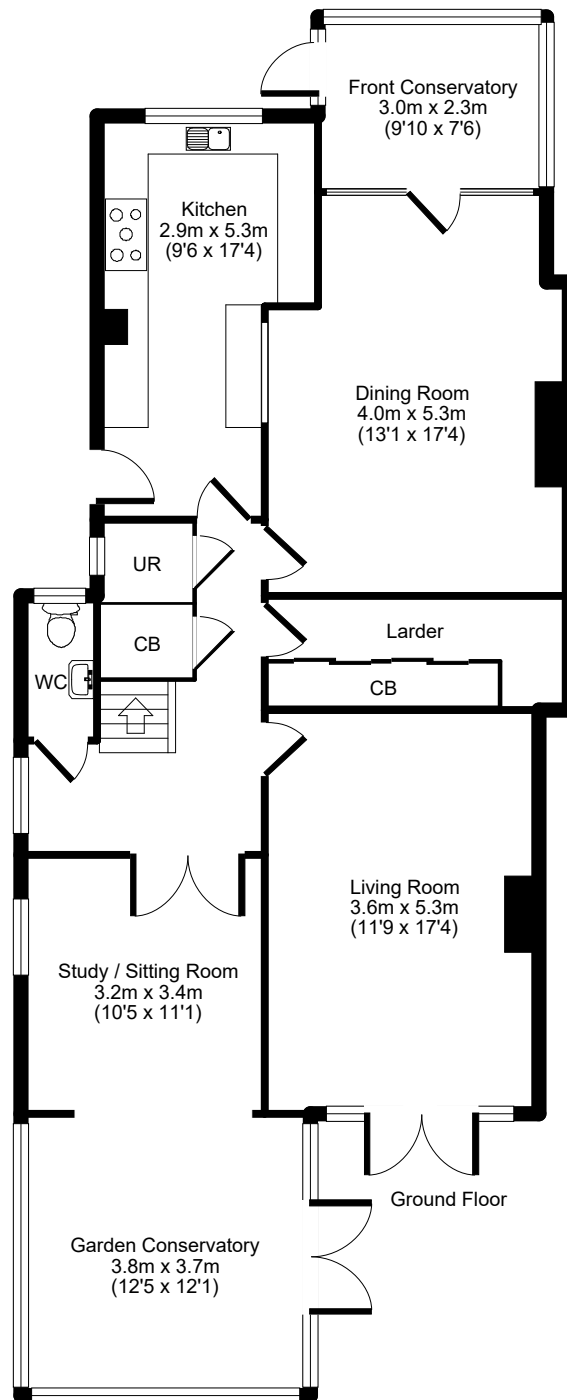


10 Yew Park, Hove Edge, HD6 2QF



APPROX GROSS INTERNAL FLOOR AREA: 183 sq. m / 1968 sq. ft

For illustrative purposes only. Not to scale. Room dimensions are given as maximum distances.

Floor Plan measurements are approximate and are for illustrative purposes only.

While we do not doubt the floor plans accuracy, we make no guarantee, warranty or representation as to the accuracy and completeness of the floor plan.

You or your advisors should conduct a careful, independent investigation of the property to determine to your satisfaction as to the suitability of the property for your space requirements.

All images and dimensions are not intended to form part any contract or warranty.

(c) Marsh & Marsh Properties